



New York State
EDUCATION DEPARTMENT

Performance-Based Learning and Assessment Networks Pilot

Update to the Board of Regents
January 2025

Research Design

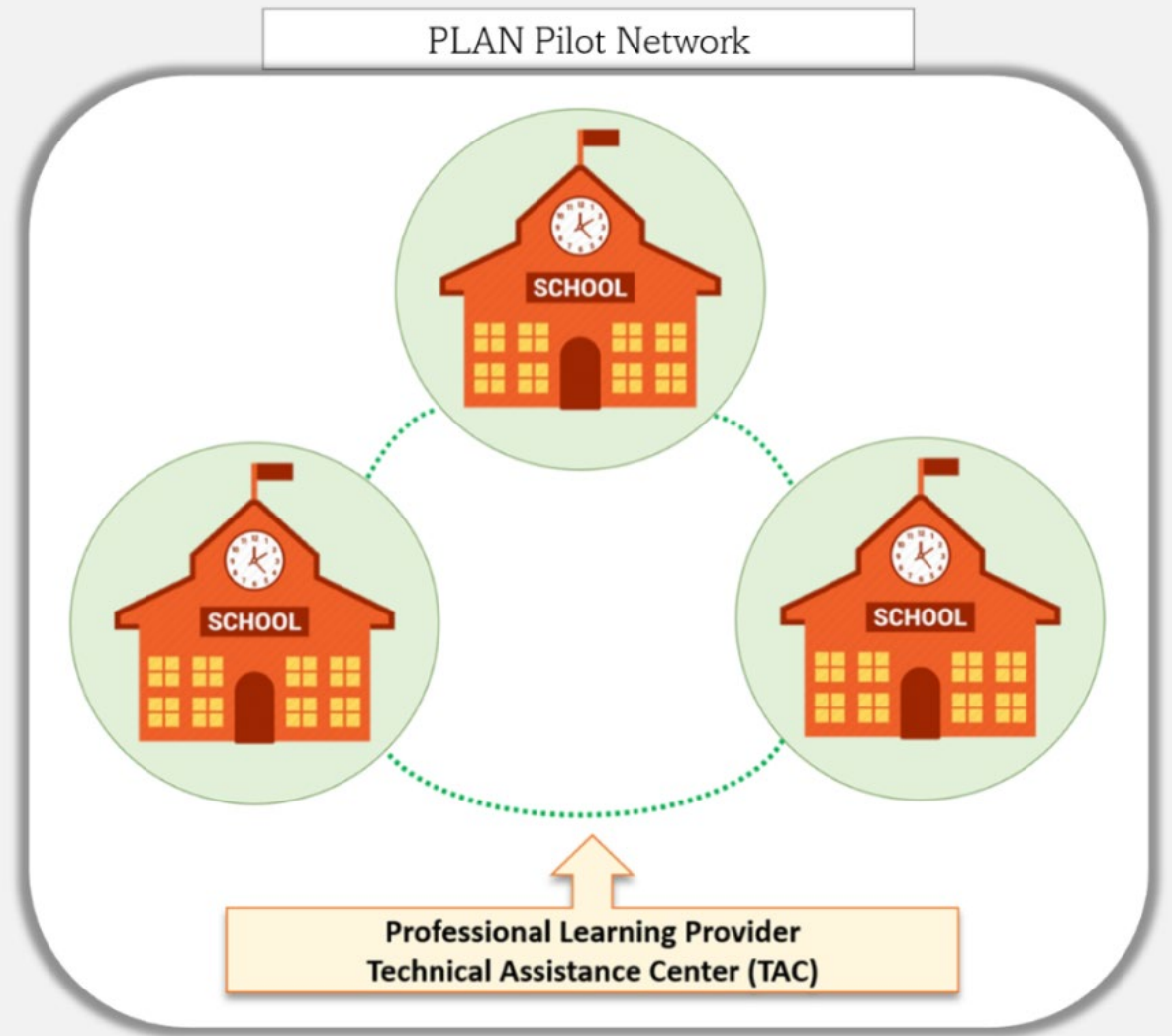
In support of the **Grad Measures Initiative**, the PLAN Pilot looks at how performance-based learning and assessment approaches can be **implemented in a diverse range of schools** – urban & rural, large & small, with different student demographics; and **how to support schools** in making that transition.



PLAN Pilot Networks

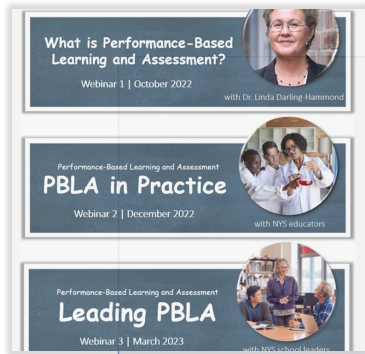
Diverse networks in different regions of NYS will be supported in implementing:

- ✓ *Engaging and supportive, student-centered school culture;*
- ✓ *High-quality, inquiry- and performance-driven instructional practices;*
- ✓ *Student voice and choice in teaching, learning, and assessment;*
- ✓ *Family and community engagement in student learning;*
- ✓ *Authentic measures of student readiness for college, career, and civic success;*
- ✓ *Assessment literacy throughout the school community.*

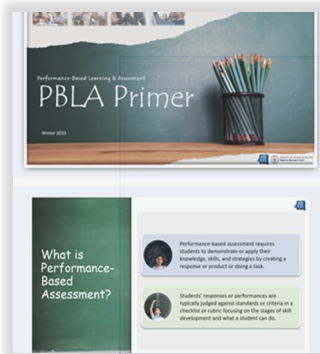


Exploratory PBLA Professional Learning

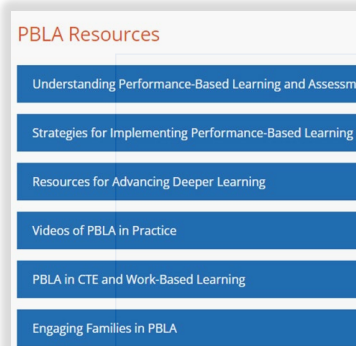
Building foundational knowledge of performance-based learning and assessment statewide.



PLAN Pilot Webinar Series



Launching Regional & Statewide Communities of Practice (CoPs)



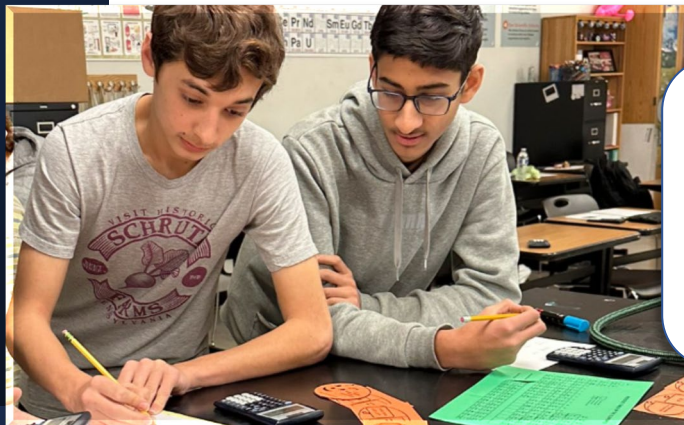
Supporting Local Professional Learning Communities (PLCs)

Performance-Based Learning & Assessment Focus Areas



A. Career & Technical Education and Work-Based Learning

School networks and regional hubs that are implementing high-quality career and technical education and work-based learning in ways that prepare students for success in the workplace.



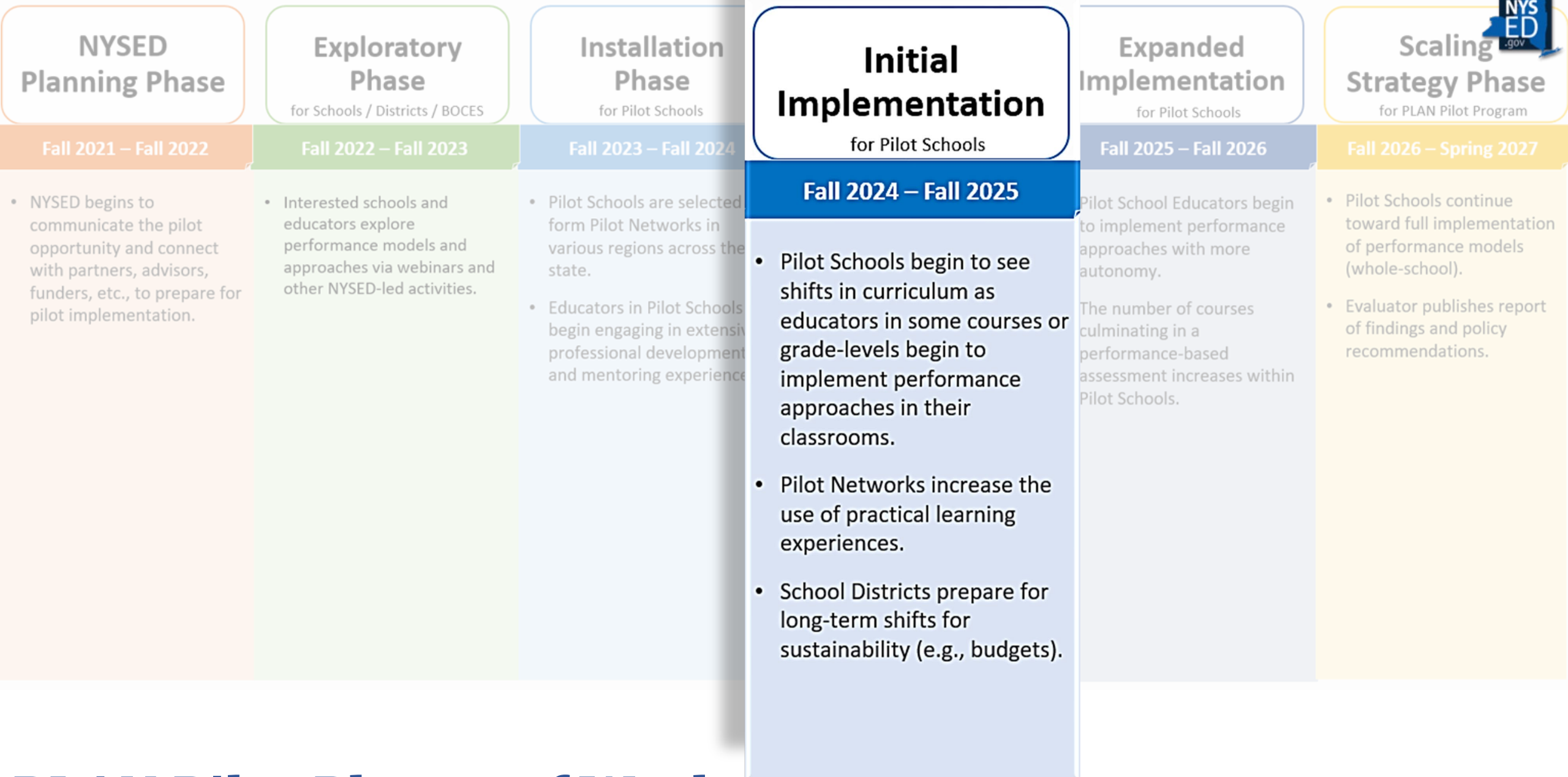
B. Inquiry-Based Approaches with Learner Profiles

School networks that use inquiry-based pedagogical approaches and assessments, designed around a learner profile, to measure students' individual performance on specified objectives.



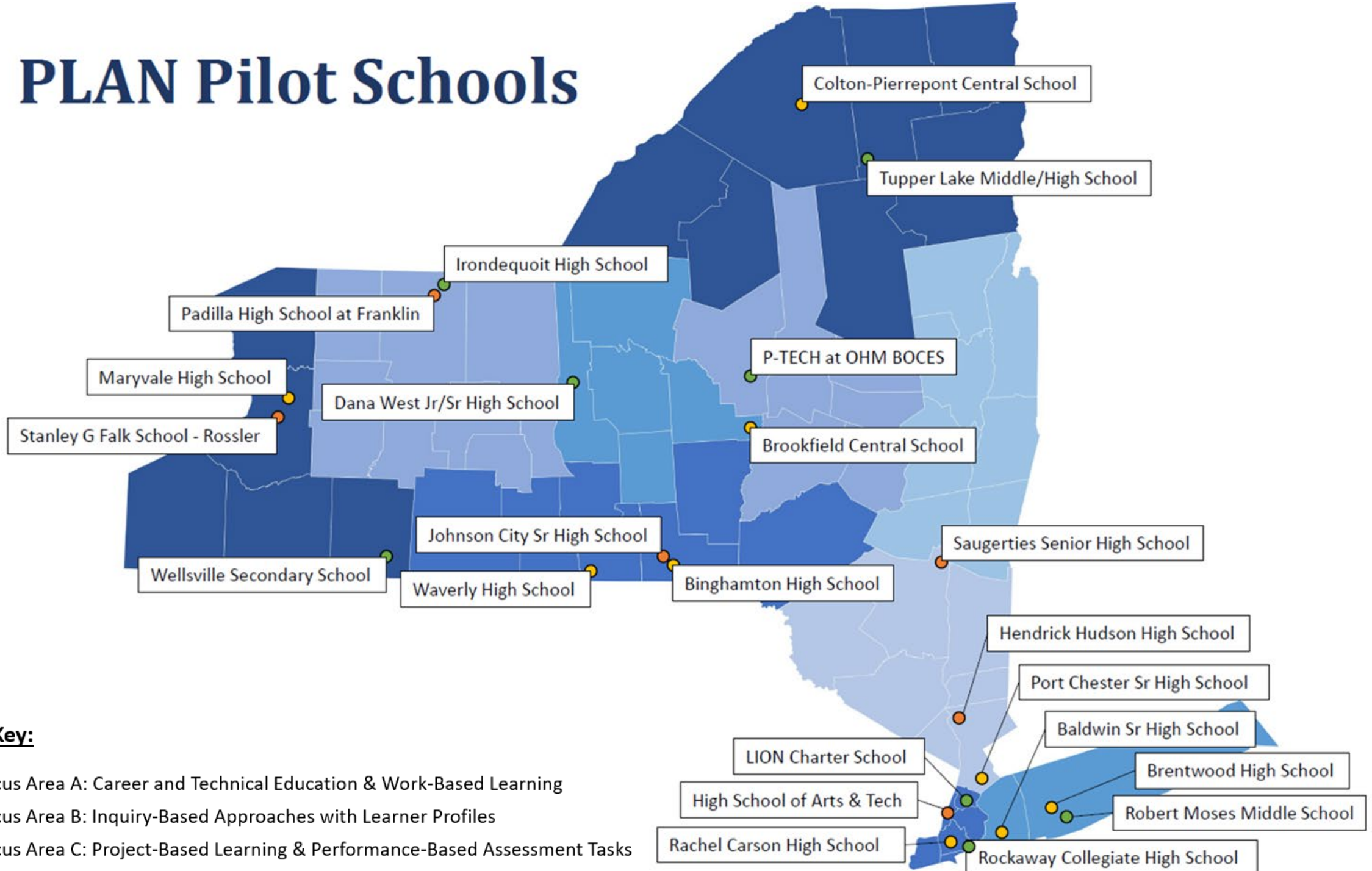
C. Project-Based Learning and Performance-Based Assessment Tasks

School networks that use a project-based learning approach and practitioner-developed performance-based assessment tasks to determine student progress.



PLAN Pilot Phases of Work

PLAN Pilot Schools





Color Key:

- Focus Area A: Career and Technical Education & Work-Based Learning
- Focus Area B: Inquiry-Based Approaches with Learner Profiles
- Focus Area C: Project-Based Learning & Performance-Based Assessment Tasks

PLAN Professional Learning Providers

are operating 3 Technical Assistance Centers (TACs)

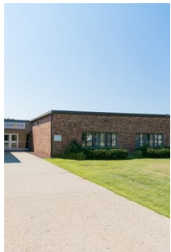
Provider	PLAN TAC
	<p>A. Career and Technical Education & Work-Based Learning</p>
	<p>B. Inquiry-Based Approaches with Learner Profiles</p> <p>C. Project-Based Learning & Performance-Based Assessment Tasks</p>

PLAN Mentor Schools

Focus Area A



Thomas A. Edison CTE High School



Questar III BOCES Robert A. Gibson Technical High School

Focus Area B



Baccalaureate School for Global Education



Harrison High School



Louis M. Klein Middle School

Focus Area C



South Bronx Community Charter High School



Tech Valley High School



Urban Assembly Maker Academy

2024-2025 Research Activities

Activities:

- Educator focus groups and school leader interviews

Objectives:

- To analyze similarities and differences in experiences across schools related to PBLA shifts
- To analyze conditions and supports for educators making changes in their instructional and assessment practices

2024-2025 PLAN Advisory Workgroups



Professional Learning



Pilot Networks



Assessment
Technical Advisory



Research

PLAN Advisors:

- ❖ reflect the diversity of New York State's school community;
- ❖ provide project staff with advice on pilot design and implementation.

Throughout, information is exchanged with experts from model networks and representatives from NYS education stakeholder organizations.



New York's Supportive Policy Environment for PBLA

The PLAN Pilot will help NYSED collaboratively explore what policies are important to support schools and educators in implementing performance-based learning and assessment.

Next Steps



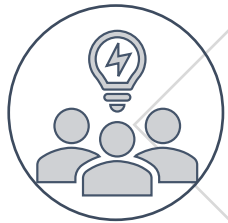
Supportive policy environment



Professional learning activities



Interviews and focus groups



Advisory workgroups

For more information, visit our website:

nysed.gov/plan-pilot

Performance-Based Learning and Assessment Networks (PLAN) Program

Performance-Based Learning and Assessment Networks (PLAN) Program is exploring the potential for New York's traditional assessment strategy to be reimaged in a way that successfully fosters high-quality instructional opportunities, includes authentic measures of deeper learning, and better prepares students for college and the workplace.

Program Description

PLAN Pilot

Advisory Workgroups

Resources & Guidance

Recent News

AUGUST 6, 2024
RE-OPENED for Focus Area
Technical Education and
Learning: PLAN Mentor
Bids (RFB)

MAY 8, 2024
State Education Department
Schools Selected for Pe
Learning and Assessment

MAY 8, 2024
RFB: PLAN Mentor Sch

UNIVERSITY OF THE STATE Regents

JOIN OUR LISTS

CONTACT US

RELATED PROGRAMS:

A photograph of a classroom with several students at desks. A student in the center foreground, wearing a pink shirt, has their right hand raised. Other students are visible in the background, some looking towards the front of the room. The scene is brightly lit, suggesting a window or large light source. The word "Questions?" is overlaid in large, bold, black text on a white rectangular background in the center of the image.

Questions?