



New York State  
EDUCATION DEPARTMENT  
Knowledge > Skill > Opportunity

*State Board for  
Engineering,  
Land Surveying,  
Geology & State Board  
for Interior Design*



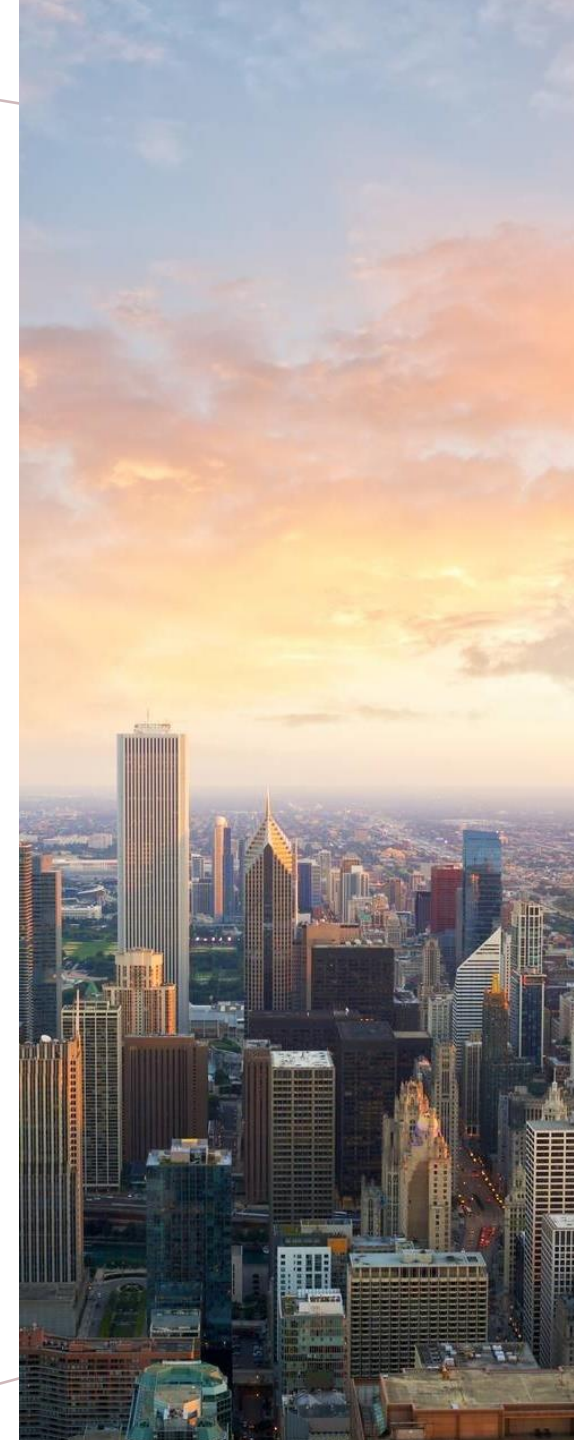
# *NYS Regulated Design Professions*

*Architecture*

*Landscape  
Architecture*

*Engineering,  
Land Surveying  
& Geology*

*Interior  
Design*





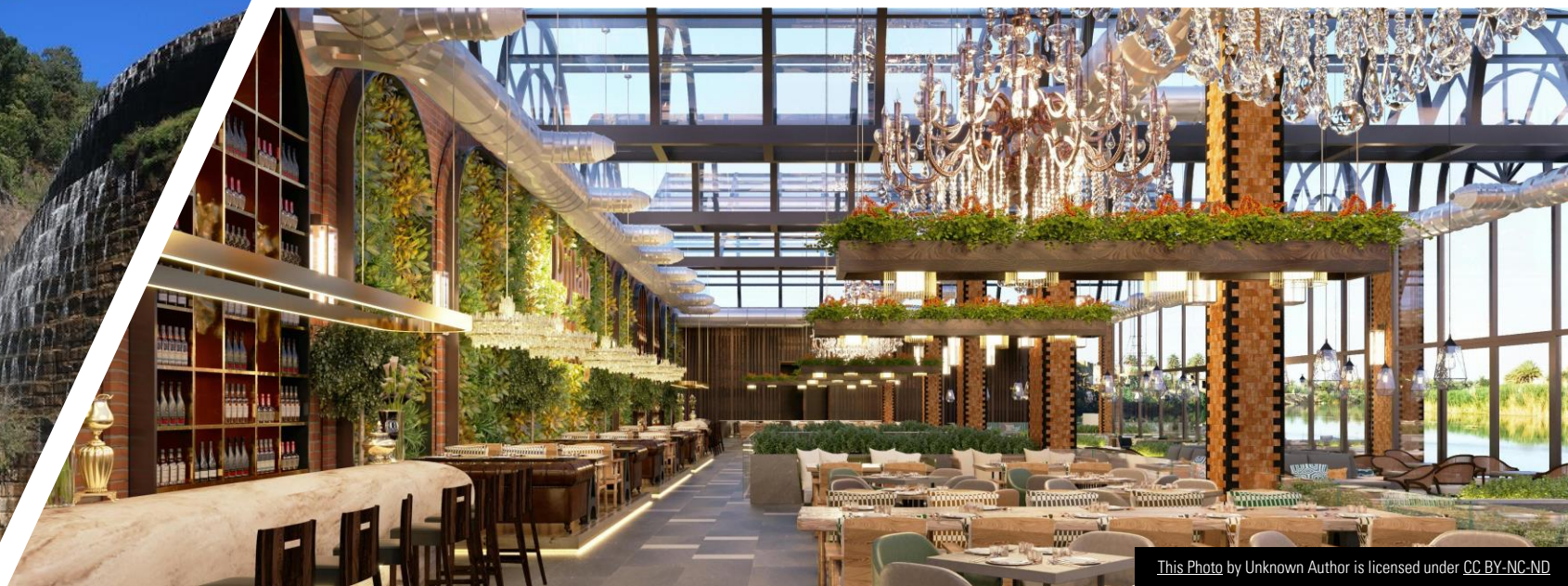
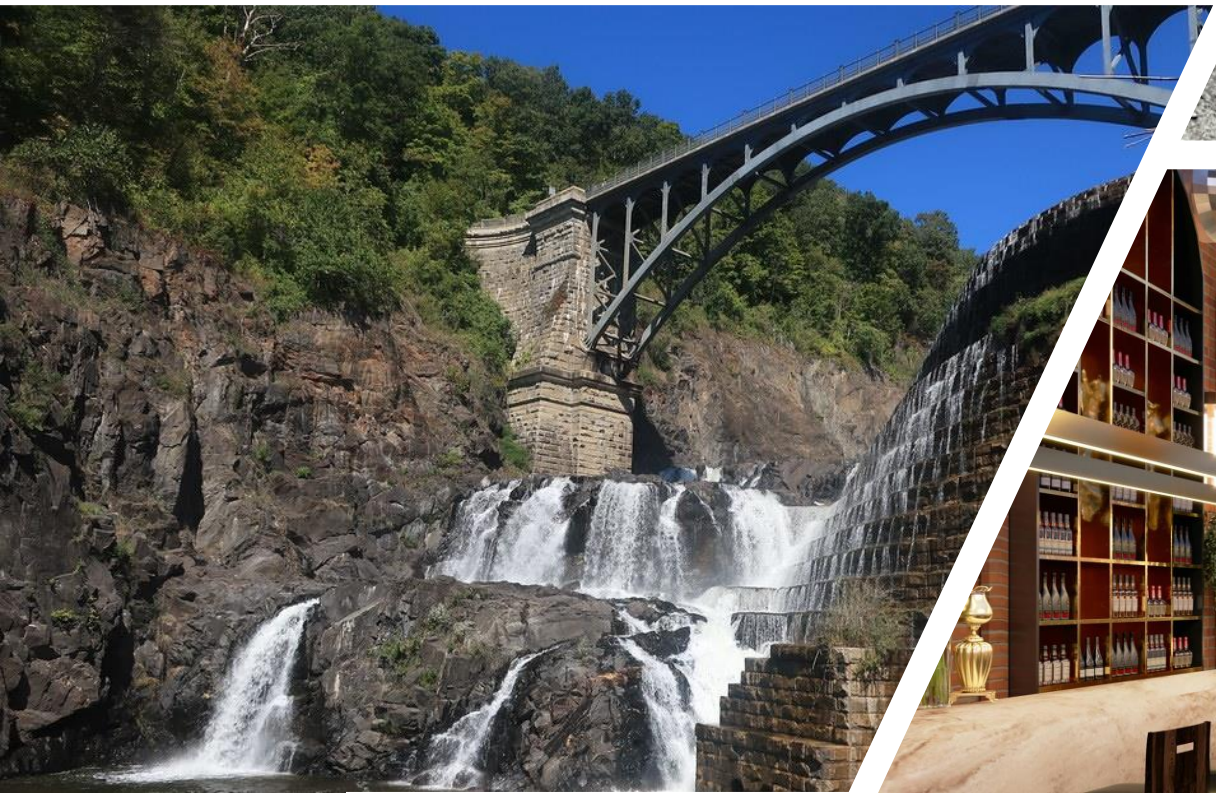
# ***New York State and the Licensed Design Professional***





*The Design Professions  
are Integrated*







# By The Numbers



<b>Profession</b>	<b>First Licensee</b>	<b>Licenseses</b> <i>(July 1, 2024)</i>
<b>Engineering</b>	<b>1923</b>	<b>34,198</b>
<b>Land Surveying</b>	<b>1923</b>	<b>1,390</b>
<b>Geology</b>	<b>2016</b>	<b>1,115</b>
<b>Interior Design</b>	<b>1994</b>	<b>334</b>



# ***Elevating Standards:***

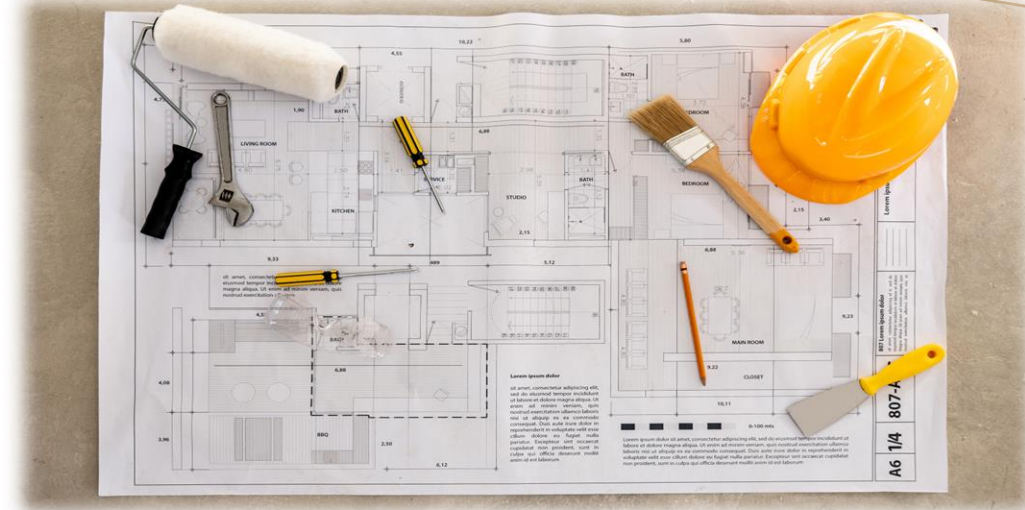
- ***Education Requirements***
- ***Continuing Education***





# Board Members Advising & Assisting NYSED

The Board of Regents appoints 9 members to the Interior Design Board and 12 members to the Engineering, Land Surveying & Geology Board, who meet the requirements in law for licensure and includes public members.















*Licensed  
Professionals...*

*...Right By  
Design!*

