



SPOTLIGHT

**OVERVIEW OF EVENTS,
ACTIVITIES, AND UPCOMING
PROJECTS**



AGENDA

- **Updates on the Office of Cultural Education's Three Priorities**
- **Highlights on How the Office of Cultural Education Supports P-12 Education**

OCE Priorities

1

Make substantial progress on the gallery renewal and storage facility projects.

2

Enhance programming and rotating exhibits to bring more vitality to the building

3

Focus on marketing – spread the word about the exciting initiatives we're undertaking

Launching in February: National Search for Next Museum Director



- Will be led by Brent Glass, PhD
- Director Emeritus of the Smithsonian's National Museum of American History (2002 to 2011)
- National leader in the preservation, interpretation, and promotion of U.S. history
- Former Executive Director (1987-2002) of the Pennsylvania Historical and Museum Commission

Two Key Appointments: Meet OCE's New Leadership

Katlyn Curtin - Director of Operations

- Extensive experience in state budgetary and administrative processes
- Former Senior Analyst for Healthcare Finance and Operations at SUNY
- Former Team Leader at the NYS Division of the Budget
- Oversaw major state expenditures, including \$34 billion in School Aid and \$27 billion in Medicaid

Jaclyn Keegan - Public Information Officer

- Over a decade of experience in journalism and public relations
- Former TV reporter and anchor, earning an Emmy nomination for investigative reporting
- Former Media Relations Strategist at Baker Public Relations
- Named to City & State's 2024 Political PR Power 75 list

A young child is shown in profile, looking intently at a museum exhibit. The exhibit consists of several large, light-colored rock samples arranged on a white surface. Each rock sample has a small white label with text next to it. A large blue circle is overlaid on the image, centered on the child and the exhibit. A smaller blue circle is overlaid on the exhibit, with a yellow dot in the center, highlighting a specific rock sample. The background is a blurred museum setting with more exhibits and labels.

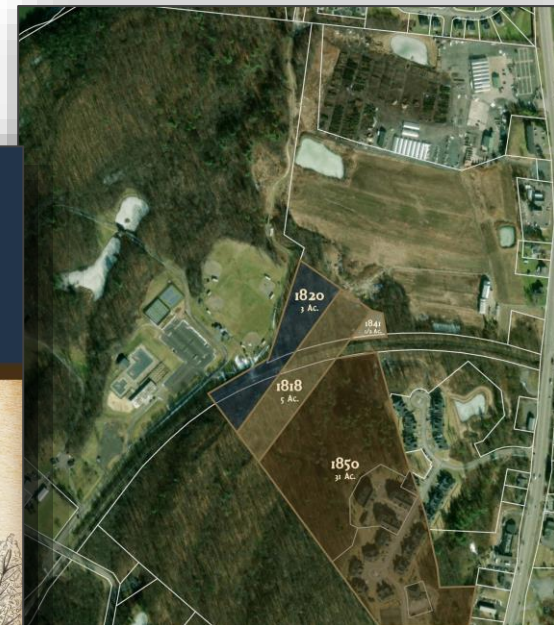
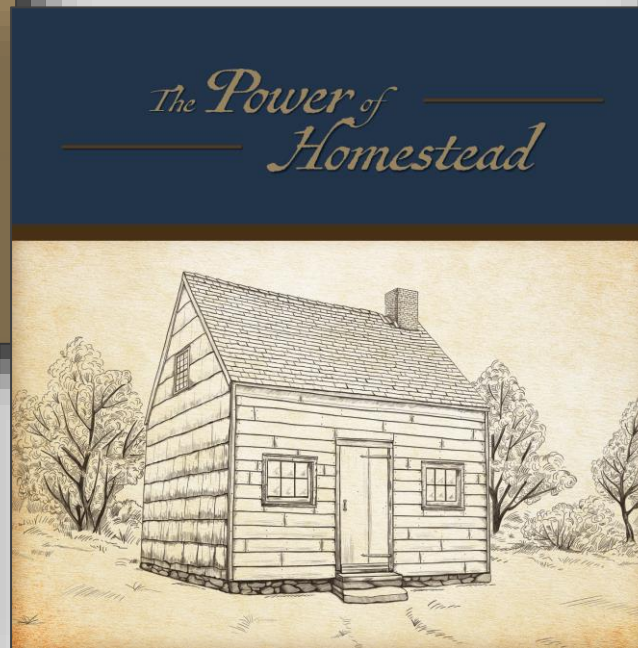
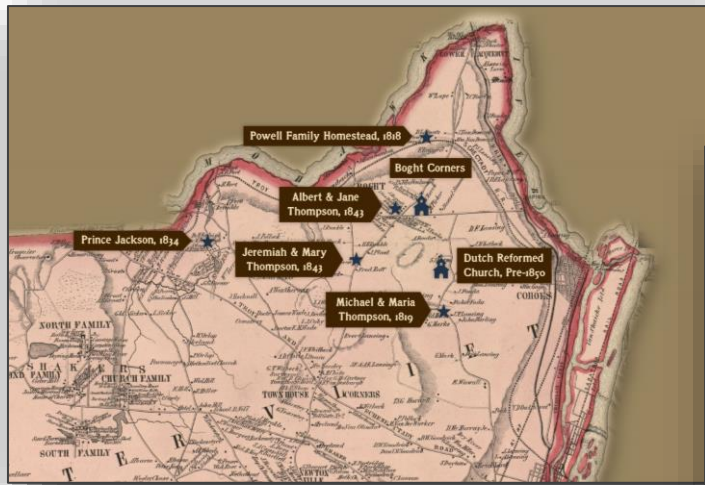
Enhance Programming/ Rotating Exhibits



The Powell Family Homestead, 1818-
1958

A New York Story

Michael Lucas, Curator of Historical Archaeology
Michael Lucas, Curator of Historical Archaeology



Ruins of the Powell Family House

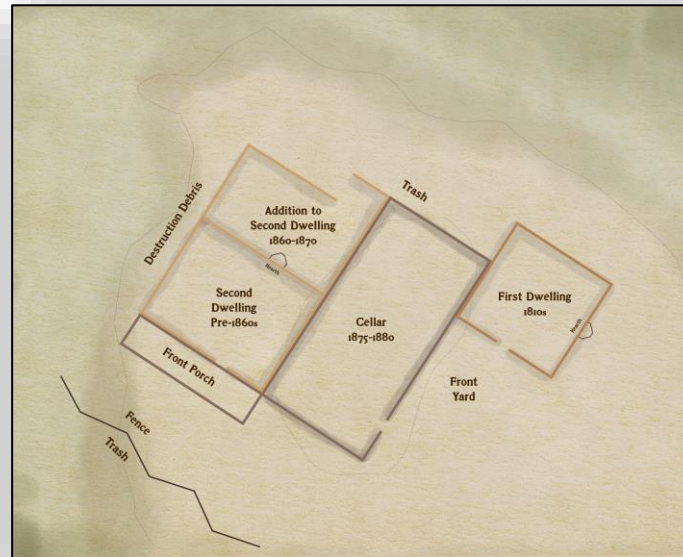
The story of one African American farming family's struggle to build and grow their homestead from 1818-1958



Powell Family Cemetery

The Power of Homestead

Archaeological and Historical Research



19	1814-1819	Thomas Powell	42	74
20		Grant	42	74
21		Paul	40	24
22		Ann E. J.	25	74
23	1874-1880	John Saw Down	62	24
24		Harriet	51	74

In the Matter of the last Will and Testament of Paul Powell deceased

Building and Preserving Collections for Future Generations



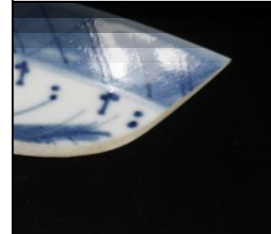
Brass Bell



1863 Token

H.E.K.
Hannah E.
Kilburn

Copper Thimble



Porcelain Saucer



Medicinal Bottle



Clay Marbles

Moving Forward Preservation and Education Partnerships



**UNDERGROUND RAILROAD
EDUCATION CENTER**
Learn the Past, Be the Present, Create the Future ®



**OPEN SPACE
INSTITUTE**



**Parks, Recreation
and Historic Preservation**



**THE
ARCHAEOLOGICAL
CONSERVANCY**



Focus on Marketing



Focus on marketing: November

FRIDAY, NOVEMBER 22, 2024

New York State Museum Hosts Sensory-Friendly Learning and Discovery Event in Partnership With “Bring on the Spectrum” for Neurodiverse Families

THURSDAY, NOVEMBER 21, 2024

New York State Museum Opens Exhibition: Margery Ryerson: Art Is Contagious

WEDNESDAY, NOVEMBER 20, 2024

Applications Open for 2025 New York State Summer School of the Arts In-Residency Program

THURSDAY, NOVEMBER 14, 2024

Statement From JP O’Hare, Education Department Spokesperson

THURSDAY, NOVEMBER 14, 2024

Lucy and the Beginnings of Humankind: Celebrate the 50th Anniversary of Lucy’s Discovery at the New York State Museum

THURSDAY, NOVEMBER 7, 2024

New York State Museum Celebrates Sesame Street and Reading Rainbow With Family-Friendly Events

WEDNESDAY, NOVEMBER 6, 2024

Regents Actions in 53 Professional Discipline Cases

MONDAY, NOVEMBER 4, 2024

State Education Department Announces “NY Inspires: A Plan to Transform Education in New York State”

Focus on marketing: December

FRIDAY, DECEMBER 20, 2024

New York State Museum Brightens the Holidays With a Week of Family-Friendly Events

THURSDAY, DECEMBER 19, 2024

State Education Department Announces Nominees for 2025 U.S. Presidential Scholars Program

TUESDAY, DECEMBER 17, 2024

First Mastodon Discovery in Over 11 Years: Stunning Prehistoric Find Unearthed in Orange County, New York

THURSDAY, DECEMBER 12, 2024

Regents Actions in 35 Professional Discipline Cases and 2 Restoration Petitions

MONDAY, DECEMBER 9, 2024

Board of Regents Advances Budget and Legislative Priorities for the 2025-26 School Year

THURSDAY, DECEMBER 5, 2024

New York State Museum and Library Celebrate 20th Anniversary of the Polar Express With a Day of Holiday Magic!

Focus on marketing: January

WEDNESDAY, JANUARY 29, 2025

Regents Actions in 33 Professional Discipline Cases and 1 Restoration Petition

WEDNESDAY, JANUARY 29, 2025

Written Testimony of Commissioner Dr. Betty A. Rosa - Joint Legislative Elementary and Secondary Education Budget Hearing

TUESDAY, JANUARY 28, 2025

Teachers, Get Ready! Attend Free CTLE-Eligible Professional Development Workshops at the New York State Museum

THURSDAY, JANUARY 23, 2025

Celebrate the Year of the Snake at the New York State Museum With Family-Friendly Lunar New Year Programs

MONDAY, JANUARY 20, 2025

Statement from Chancellor Lester W. Young, Jr., the Board of Regents, and State Education Commissioner Betty A. Rosa on Martin Luther King Jr. Day

FRIDAY, JANUARY 17, 2025

Lost Lichen Specimens Rediscovered by State Museum Botanist Offer a Look Into New York City's 19th-Century Ecology

THURSDAY, JANUARY 16, 2025

Applications Open for 2025 Empire State Arts Scholarship Program

THURSDAY, JANUARY 9, 2025

Sound the Alarm: New York State Museum Unveils Updated Fire Engine Hall Exhibit With "Fear Not, We Come"

Focus on marketing: Highlighting Experts

- Dr. James Lendemer of the NY State Museum rediscovered long-lost lichen collection otherwise lost to history.
- Thought to have been destroyed in an 1866 fire, the specimens date back over 200 years.
- In 1823, NYC had 129 lichen species documented; today, only 18 remain.
- Highlights drastic biodiversity loss due to human activity and urbanization.
- Reinforces museums' role in connecting past discoveries to present challenges.

LOST LICHEN SPECIMENS REDISCOVERED BY STATE MUSEUM BOTANIST OFFER A LOOK INTO NEW YORK CITY'S 19TH-CENTURY ECOLOGY

Release Date:

Friday, January 17, 2025

Media Contact:

JP O'Hare

(518) 474-1201

Press@nysed.gov

www.nysed.gov

Includes Specimens Originally Collected in Manhattan in 1823



Additional high resolution photos available [here](#)

A historically significant collection of lichen specimens believed to have been lost to an 1866 fire was recently rediscovered by Dr. James Lendemer, curator of botany at the New York State Museum. The serendipitous find will allow scientists to reliably reconstruct pre-industrial lichen communities from New York City, a task that up until now was not thought to be possible.

Focus on marketing: Highlighting Experts

FIRST MASTODON DISCOVERY IN OVER 11 YEARS: STUNNING PREHISTORIC FIND UNEARTHED IN ORANGE COUNTY, NEW YORK

Release Date:

Tuesday, December 17, 2024

Media Contact: JP O'Hare >

(518) 474-1201

Press@nysed.gov

www.nysed.gov



Focus on marketing: Highlighting Experts

U.S. Politics World Opinion Media Entertainment Sports Lifestyle Video AI More :


Q Login Watch TV

Complete mastodon jaw found in New York homeowner's backyard: 'Remarkable discovery'

Discovery in Orange County is first of its kind in 11 years, New York State Museum says

By **Greg Norman** · Fox News

Published December 18, 2024 7:33am EST



reach with
Zepbound[®]

*Along with diet and exercise.
†Individual results may vary. In studies, average weight loss in adults with or without diabetes was -15% (34 lbs) on 5 mg, -13-26% (28-44 lbs) on 10 mg, and -15-21% (33-48 lbs) on 15 mg compared to -2% (7 lbs) on placebo. Avg. baseline weights were ~229-233 lbs.

INDICATION AND SAFETY SUMMARY WITH WARNINGS

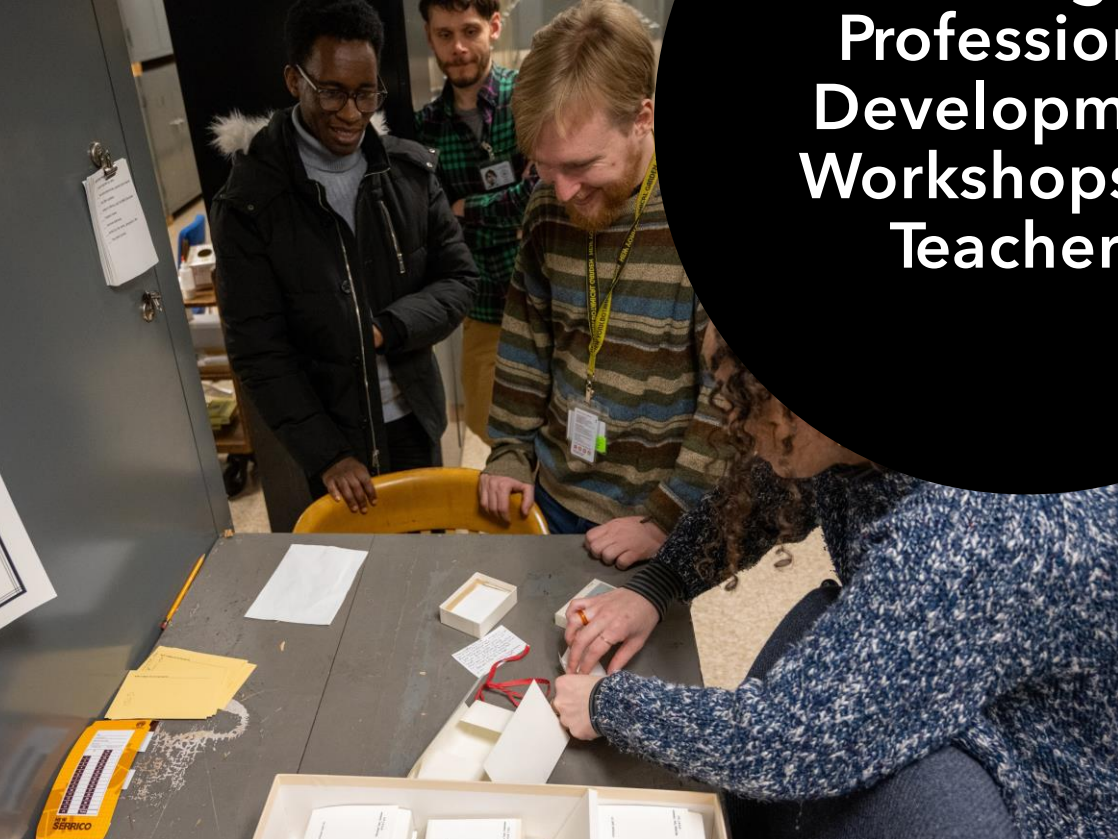
Zepbound[®] (ZEHP-bownd) is an injectable prescription medicine that may help adults with obesity, or with excess weight (overweight) who also have weight-related medical problems, lose weight and keep it off. It should be used with a



Highlight on How OCE Supports P-12 Education



**CTLE-Eligible
Professional
Development
Workshops for
Teachers**



Free CTLE-Eligible Professional Development Workshops for Teachers



Gathering Chestnuts in P
The Art Journal, n



New York State Libraries & Education

**State Librarian:
Lauren Moore**



Libraries Are Education



NYS Personal History Initiative

The NYS Library's Personal History Initiative collects and preserves stories from New Yorkers and New York's communities. We accept submissions directly through our [New York Experience prompts](#) and we support communities working to document their history.

[Browse All Digital Collections](#)

New York Spotlight: Arts Education

New York Spotlight: Arts Education

New York State is home to a vibrant arts scene and is a leader in arts education. Teachers from all New York communities are invited to contribute media and stories to exhibit how students are shaping our cultural landscape.

[Submit Student Artwork](#)



Libraries Are Literacy



DayByDayNY
FAMILY LITERACY CALENDAR



 **One More Story**
Authors You Know, Books You Love



READING UNDER THE STARS

Blast off to the moon and beyond with children's summer reading titles.
Find out more with Gale's *Books & Authors*.



NOVELny Connects Teachers, Librarians, and Students to Trusted Resources

Subjects

Business

Careers

Education

Encyclopedias

General

Health

History

Hobbies

Humanities

Kids

Law

Newspapers

Science

Spanish



New York State Archives & Education

**State Archivist:
Brian Keough**





ConsidertheSourceNY.org



BROWSE
Historical Records

ACCESS
Learning Activities

BUILD/SHARE
Learning Activities

GETTING STARTED

USING PRIMARY SOURCES

TYPES OF ACTIVITIES

HOW TO VIDEOS

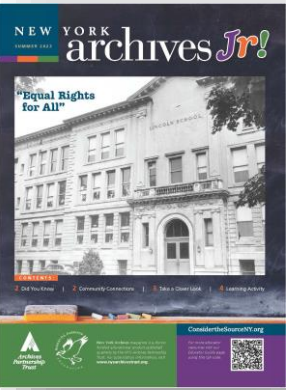
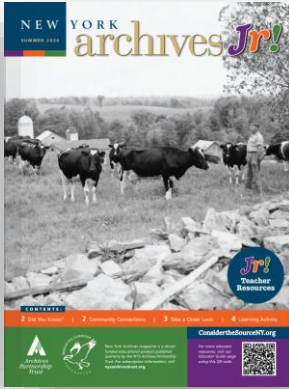
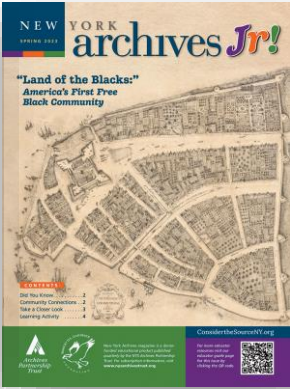
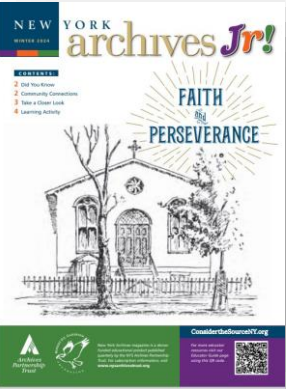


Consider the Source Online is made possible by the Robert David Lion Gardiner Foundation of New York and supporters of the NYS Archives Partnership Trust.



3,858 primary sources * 2,925 learning activities * 1,960 registered users

Over 150,000 page views * over 100,000 new users * 5,000+ users per month



NEW YORK archives magazine



NEW YORK archives Jr!

ConsidertheSourceNY.org
 books | games | music

An educational companion to New York Archives magazine for grades 4-8
 SUMMER 2023

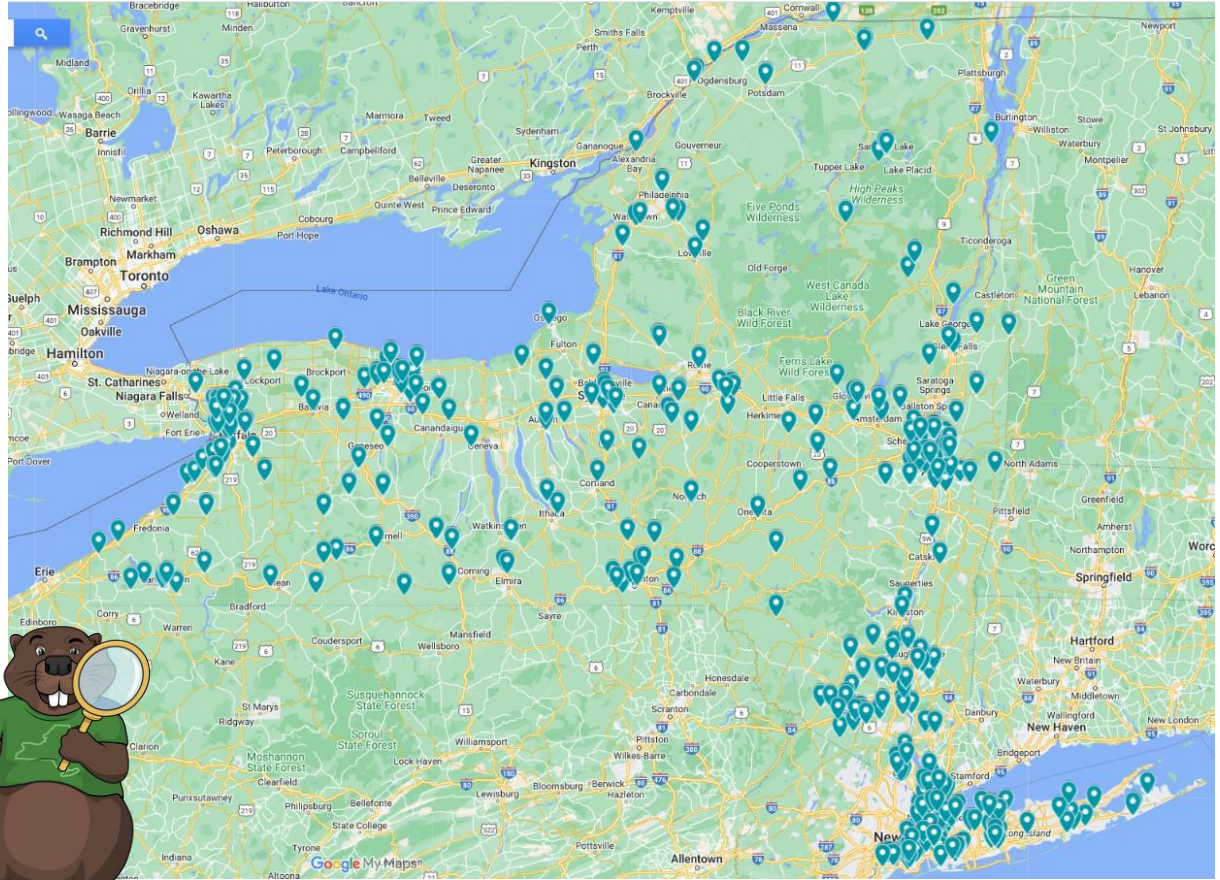


Special Editions with videos on Revolutionary War, Enslavement in New York, Learn about Archives. Coming Soon: Civic Engagement and Urban Renewal





Over 100,000 copies
requested by
educators statewide



NEW YORK STATE ARCHIVES CELEBRATES BLACK HISTORY MONTH



CULTURAL EDUCATION CENTER
NEW YORK STATE ARCHIVES / NEW YORK STATE LIBRARY
11TH FLOOR LOBBY / FEBRUARY 2025

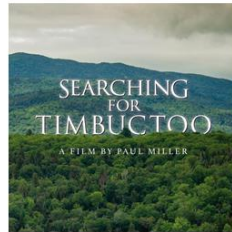
EMBATTLED:

The Triumphs and Trials of Black New York Soldiers

A display in celebration of Black History Month

New York State Library

Searching for Timbuctoo Viewing and Discussion



Thursday, February 20
Film & Discussion: 2:30 pm - 4:00 pm

Document Display and Exhibit: All Day!

Huxley Theater
New York State Museum
222 Madison Avenue, Albany, NY

Join New York State Archivist, Brian Keough and filmmaker, Paul Miller for an in-person viewing and discussion of WMHT's short film, *Searching for Timbuctoo*.

Come early or stay late for the State Archives' ONE-day only document display of the: 1846 Receipt Book of land grants from Gerrit Smith and Transcription Copy. Also not to miss is the State Museum's Exhibit: *Timbuctoo: Gerrit Smith's Experiment in Adirondack Hall*

More info



Feb. 4th - Online Speaker Series
The Black Woods



Coming Soon!

Special Editions on the history of Enslavement in New York State. Issues will include a short educational video based on the content featured in the first of a series of traveling exhibits in the *Enslavement to Freedom* project created by NYS Parks, titled *Poisonous Seeds*.

<https://www.youtube.com/watch?v=DJObXmYMWoY>



ConsidertheSourceNY.org

DISCOVER LEARN SHARE

Black History Month Resources

<https://considerthesourcenyny.org/featured-collections/black-history-resources>

New York State Museum & Education

Director of Community Engagement & Education
Kathryn Weller

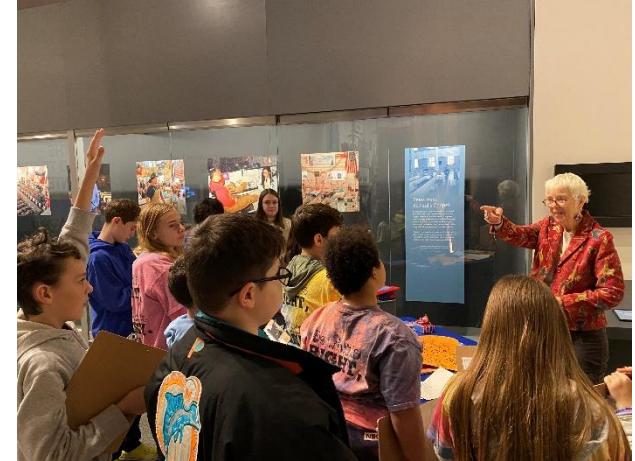


Teacher Professional Development Opportunities and Collaborations with CTLE



- SED & MANY collaborations to educate NYS cultural institutions on CTLE
- Teacher professional development with NYSM & OCE resources
- Model created for CTLE eligible in-person and virtual asynchronous public programming
- Smithsonian & MANY collaboration to offer CTLE certified teacher PD throughout NYS
- Outreach directly to educators through teacher-supporting organizations and conferences

Connecting Students Directly with Historians, Scientists, and Collections



- Inquiry-based, Museum Instructor-led opportunities
- Content specialist-focused programming
- Self-guided museum experiences
- Research & NYS Educational Standards-supporting resources and activities
- Collaborating with our colleagues in SED on educational initiatives.

New York State Museum & Education

Director of Research & Collections
Robert Feranec





Research & Collections

P-12 Education & Resources

Dr. Robert Feranec

Director of Research & Collections

Curator of Vertebrate Paleontology



Primary-School Level



High-School Level





Teacher's Workshops & Lesson Plans





Earth Science Reference Table



The University of the State of New York • The State Education Department • Albany, New York 12234 • www.nysed.org

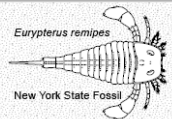
Reference Tables for EARTH & SPACE SCIENCES

Table of Contents

Page	Title	Primary PE
2	Solar System Objects Data Table	(HS-ESS 1-4)
2	Generalized Nucleosynthesis in a Massive Star	(HS-ESS 1-3)
3	Portion of Electromagnetic Spectrum Related to Earth and Space Sciences	(HS-ESS 1-2)
3	Emission Spectra of Some Elements from Stars	(HS-ESS 1-2)
4	H-R Diagram	(HS-ESS 1-3)
5	Life Cycles of Stars Model	(HS-ESS 1-3)
6-7	Geologic History of New York State	(HS-FSS 2-7)
8	Generalized Surface Bedrock Geology of New York State	(HS-FSS 2-1)
9	Energy and Mineral Resources of New York State	(HS-ESS 3-1)
10	Geographic Province and Landscape Regions of New York State	(HS-ESS 2-1)
11	Model of Earth's Interior Structure	(HS-ESS 2-3)
11	Cross Section Model of Earth's Surface and Interior	(HS-ESS 2-3)
12	Global Tectonic Activity of the Last One Million Years	(HS-ESS 1-5)
13	Model of Bowen's Reaction Series	(HS-ESS 2-3)
13	Mineral Composition of Igneous Rocks	(HS-ESS 2-3)
14	Rock Cycle Infographic	(HS-ESS 2-5)
15	Geologically Important Radioactive Elements Used for Radiometric Dating	(HS-ESS 1-6)
16-17	Mineral Identification Flowchart	(HS-ESS 2-3)
18	Key to Weather Map Symbols	(HS-ESS 2-8)
19	Model of Generalized Planetary Wind Belts in the Troposphere	(HS-ESS 2-8)
19	Cross Section Model of Earth's Lower Atmosphere	(HS-ESS 2-8)
20	Surface Ocean Currents Model	(HS-ESS 2-4)

2024 EDITION

This edition of the Earth and Space Sciences Reference Tables should be used in the classroom beginning in the 2024–25 school year. The first examination for which these tables will be used is the June 2025 Regents Examination in Earth and Space Sciences.





Questions?

