



Office of Special Education

School District
Determinations under the
Individuals with Disabilities
Education Act (IDEA)

STATE PERFORMANCE PLAN / ANNUAL PERFORMANCE REPORT: PART B
for STATE FORMULA GRANT PROGRAMS under the Individuals with Disabilities Education
Act

For reporting on
FFY 2023

New York



PART B DUE February 3, 2025

U. S. DEPARTMENT OF EDUCATION
WASHINGTON, DC 20202

State Performance Plan/ Annual Performance Report

- The Individuals with Disabilities Education Act (IDEA) requires each state to develop a State Performance Plan (SPP)/Annual Performance Report (APR) that:
 - evaluates the state's efforts to implement the requirements and purposes of the IDEA; and
 - describes how the state will improve its implementation.
- States must report annually on their progress against the targets in their SPP/APR.
- A new SPP/APR is developed at least every six years.

Change in IDEA Determination Criteria



Current Determinations

- 1 ESSA Identification
- 2 Long-Standing Noncompliance
- 3 Consecutive Years

2025-26 Determinations

- 1 Performance Matrix
- 2 Compliance Matrix
- 3 Consecutive Years

Annual IDEA Determinations for School Districts



NYSED Office of Special Education annually determines if each school district:

Meets Requirements and purposes of the IDEA	Needs Assistance in implementing the requirements of the IDEA	Needs Intervention in implementing the requirements of the IDEA	Needs Substantial Intervention in implementing the requirements of the IDEA
--	--	--	--

School District IDEA Determinations Criteria



01

SPP Performance and Compliance Indicators

03

Correction of Identified Noncompliance

02

Timely and Accurate Data

04

Other Data Including Any Relevant Audit Findings

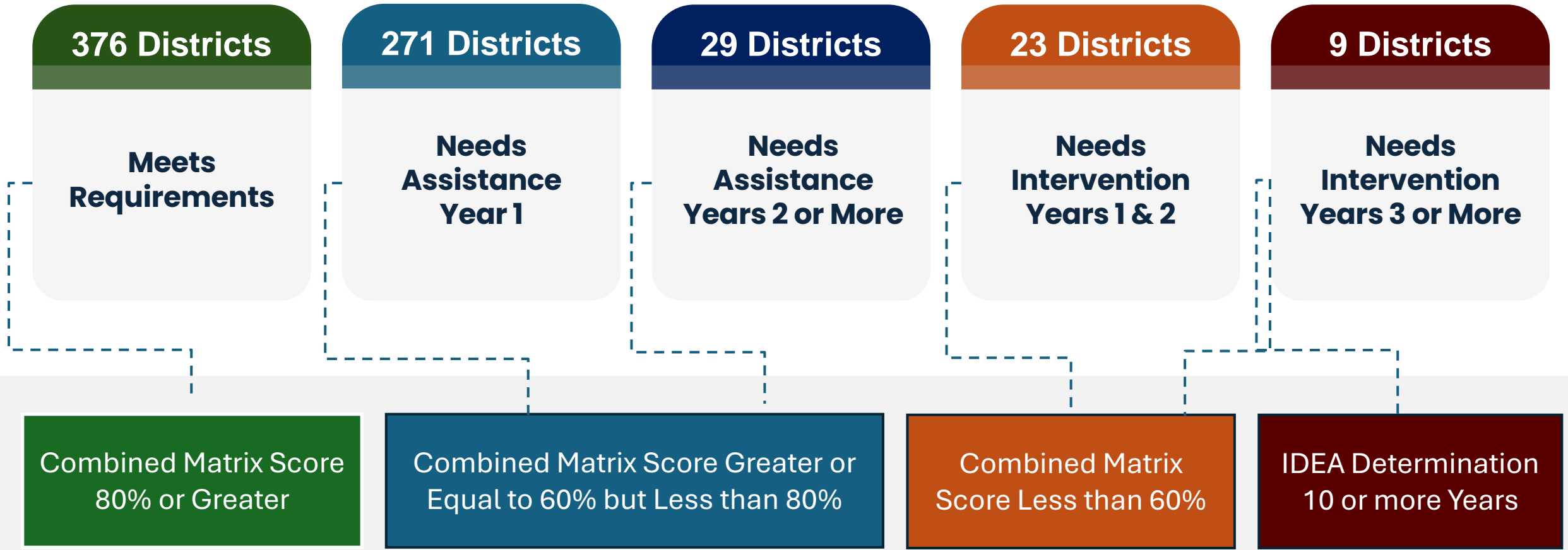
Performance Matrix

Performance Matrix	22 Points
SPP Indicator 1 Graduation	2
SPP Indicator 2 Drop Out	2
SPP Indicator 3B 4 th Grade Reading	2
SPP Indicator 3B 4 th Grade Math	2
SPP Indicator 3B 8 th Grade Reading	2
SPP Indicator 3B 8 th Grade Math	2
SPP Indicator 5A School-Age Regular Class > 80%	2
SPP Indicator 5B School-Age Regular Class < 40%	2
SPP Indicator 5C School-Age Separate Setting	2
SPP Indicator 6A Preschool Regular Setting	2
SPP Indicator 6B Preschool Separate Setting	2

Compliance Matrix

Compliance Matrix	23 Points
SPP Indicator 4B Suspension and Expulsion	2
SPP Indicator 9 Disproportionate Representation	2
SPP Indicator 10 Disproportionate Representation in Specific Disability Categories	2
SPP Indicator 11 Timely Evaluation	2
SPP Indicator 12 Early Childhood Transition	2
SPP Indicator 13 Secondary Transition	2
Timely and Accurate Data	2
Correction of Noncompliance	5
Timeliness of Due Process Hearing Decisions	2
Audit Finding Resulting in an Outstanding NYSED Enforcement Action or Specific Conditions on the District's IDEA Part B Grant Award	2

2025-26 School District IDEA Determinations



2025-26 School District Interventions



271 Districts

**Needs Assistance
Year 1**

29 Districts

**Needs Assistance
Years 2 or More**

23 Districts

**Needs Intervention
Years 1 & 2**

9 Districts

**Needs Intervention
Years 3 or More**

Proactive Intervention

Professional development selected by the district

Focused Intervention

Required professional development and progress monitoring targeted to address areas of concern

Coordinated Intervention

Enhanced support of the districts' improvement activities through technical assistance, professional development, and stakeholder engagement, with oversight and monitoring of the district's actions to resolve areas of concern

Intervention districts may not reduce their maintenance of effort for purposes of the IDEA grant eligibility

Stakeholder Engagement

The Office of Special Education is conducting stakeholder engagement to:

Describe and discuss the Performance Matrix and Compliance Matrix categories and data; and

Receive input on activities or focus areas to improve outcomes in districts that do not receive full points.





Thank You



New York State
EDUCATION DEPARTMENT
Knowledge > Skill > Opportunity